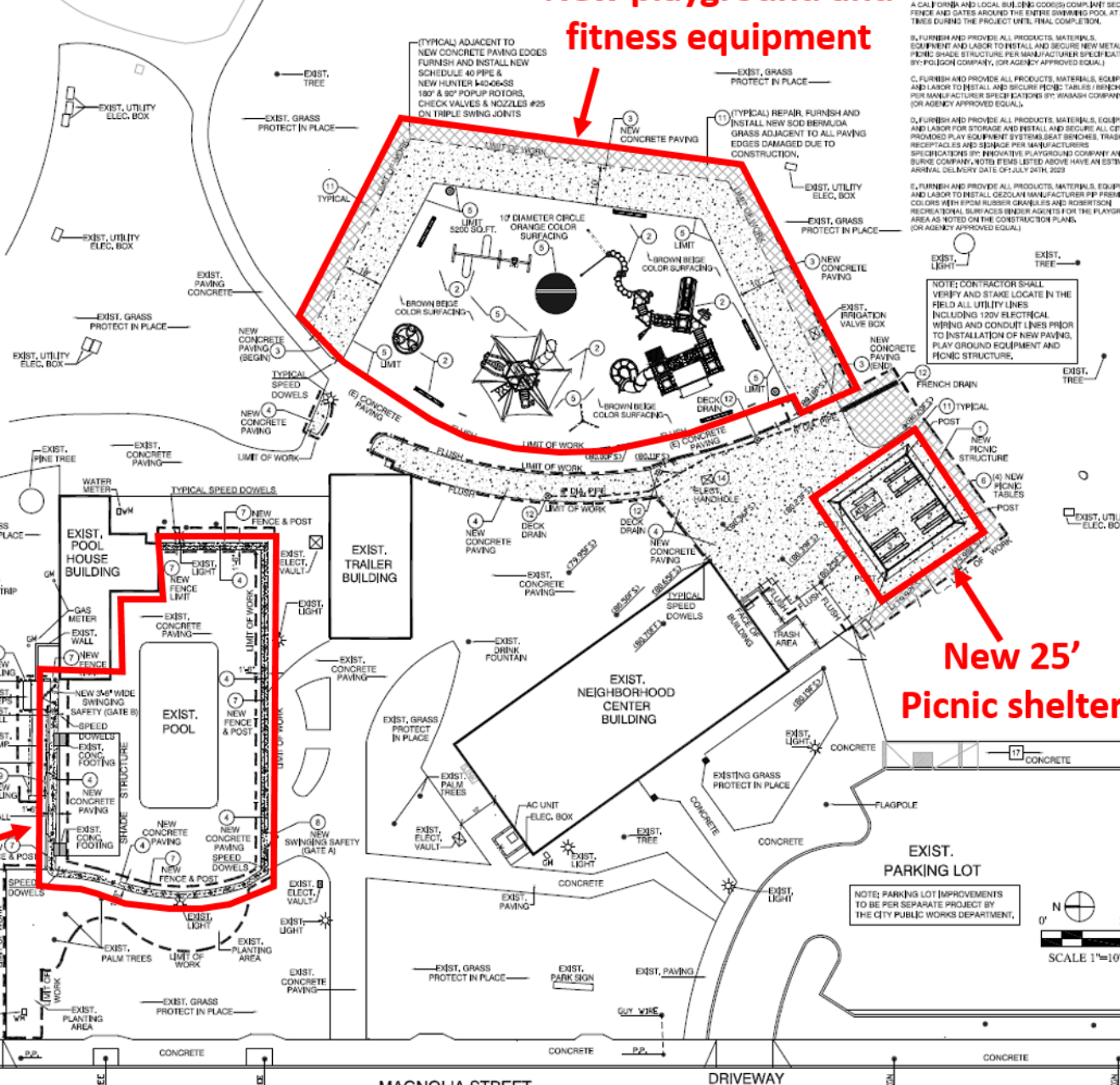


CONSTRUCTION CALLOUTS

1. FURNISH AND INSTALL (4) FOUR METAL POST, FRAMING AND FOUR (4) POLYMER SOLID METAL ROOF PANELS OVER SHED STRUCTURE. (3) POLYMER SOLID METAL ROOF PANELS. MODEL # 50R24N-RP (TYPE) MULTIBARS. FRAME COLOR: GREYSTONE. ROOF COLOR: ROMAN BLUE. CONTACT MANUFACTURER PLAYGROUND SALES JOHN JARON (714) 942-2222 FOR MANUFACTURER PLANS AND DETAILS SHEET #4 FOR ADDITIONAL INFORMATION. NOTE: CONTRACTOR SHALL TEMPORARILY STAKE LOCATE AND VERIFY PLACEMENT OF (4) METAL SHED ORBES WITH CITY REPRESENTATIVE PRIOR TO FINAL INSTALLATION.
2. COORDINATE DELIVERY TO JOBSITE, STORE AND INSTALL CITY PROVIDED PLAY EQUIPMENT. FURNISH AND INSTALL TRASH RECEPTACLES AND SIGNAGE BY INNOVATIVE PLAYGROUNDS AND BUNGE COMPANIES CONTACT: VANESSA LARSEN (800)468-6800. NOTE: CONTRACTOR SHALL TEMPORARILY MARK LOCATE AND VERIFY PLACEMENT OF ALL PLAY EQUIPMENT WITH SAFETY ZONES ORBES WITH CITY REPRESENTATIVE PRIOR TO FINAL INSTALLATION. REFER TO INNOVATIVE PLAYGROUND LAYOUT MATERIALS AND DETAIL DRAWINGS (ATTACHED IN PLAN SET SHEET 14).
3. (FITNESS EQUIPMENT PAVING AREA) DEMOLISH EXISTING 4" THICK NATURAL CONCRETE PAVING WITH STEEL REINFORCEMENT OVER 90% COMPACTED CAR BASE. FINISH TO BE LIGHT BROOM FINISH. NOTE: FURNISH AND INSTALL GREENSTRIP SPEED DOWELS AT 2' O.C. SPACING TO ENTIRE LENGTH OF ALL NEW TO EXISTING CONCRETE PAVING EDGE INTERFACE, PER MANUFACTURER SPECIFICATION. SYMBOL ON PLAN REPRESENTS BEGINNING AND END POINTS OF WHERE SPEED DOWELS ARE TO BE INSTALLED. SEE DETAIL A SHEET 14.
4. (PARK AREA & POOL DECK PAVING AREA) DEMOLISH EXISTING 4" THICK NATURAL CONCRETE PAVING WITH STEEL REINFORCEMENT OVER 90% COMPACTED CAR BASE. FINISH TO BE LIGHT BROOM FINISH. NOTE: FURNISH AND INSTALL GREENSTRIP SPEED DOWELS AT 2' O.C. SPACING TO ENTIRE LENGTH OF ALL NEW TO EXISTING CONCRETE PAVING EDGE INTERFACE, PER MANUFACTURER SPECIFICATION. SYMBOL ON PLAN REPRESENTS BEGINNING AND END POINTS OF WHERE SPEED DOWELS ARE TO BE INSTALLED. SEE DETAIL A SHEET 14.
5. (PLAYGROUND AREA) FURNISH AND INSTALL NEW PLAYGROUND POWERED IN PLACE (PIP) GEOLAM PREMIUM EPDM SAFETY SURFACING MATERIAL LAYERS AND BINDER AGENTS OVER COMPACTED BASE BY ROBERTSON RECREATION SURFACES COMPANY (800)468-6800 (OR AGENCY APPROVED EQUALS). MAIN PLAY AREA COLOR CONCRETE TO BE BROWN TRAC-BOND WITH AROMATIC BINDER AND 10' DIAMETER CIRCLE COLOR # 683 BRIGHT ORANGE / FLU 2008 WITH ALPHABETIC BINDER. SEE DETAIL B SHEET 14.
6. FURNISH AND INSTALL (4) FOUR NEW EXPANDED METAL WITH PLASTIC BOLTS AND OUTDOOR PICNIC TABLES WITH BENCH SEATS FROM PARADISE VALLEY MANUFACTURER (800)468-6800 (OR AGENCY APPROVED EQUALS). MODEL SERIES SIGNATURE SERIES 450119P (ADA) & 501119P (STD). SIZE: (1) ADA COMPLIANT AND (3) STANDARD. PATTERN ROUND PERFORMANCE COLOR BLUE. NOTE: SECURE WITH METAL ANCHOR STRAPS AND LAG BOLTS INTO CONCRETE. FURNISH AND INSTALL (4) NEW TO EXISTING CONCRETE PAVING PER MANUFACTURER SPECIFICATION. NOTE: CONTRACTOR SHALL TEMPORARILY STAKE LOCATE AND VERIFY PLACEMENT OF PICNIC TABLES BENCHES ORBES WITH CITY REPRESENTATIVE PRIOR TO FINAL INSTALLATION.

7. FABRICATE AND INSTALL NEW PAINTED #1000 HIGH TUBULAR STEEL FENCE WITH POSTS, (2) TWO TOP AND (1) ONE BOTTOM HORIZONTAL RAIL AND VERTICAL PICKETS, COLOR TO BE FLAT BLACK. SEE DETAIL C & E SHEET 14 FOR FENCE ORBINGS.
8. FABRICATE AND INSTALL (2) TWO NEW #1 HIGH TUBULAR STEEL POOL SAFETY GATES WITH HEAVY DUTY HINGES AND LATCHING DEVICES, (GATE A) 4' WIDE AND GATE (B) 3' WIDE. NOTED GATES SHALL BE OUTWARD OPENING, SELF CLOSING, SELF LATCHING AND SELF LOCKING AND MEET ALL POOL SAFETY STANDARDS, COLOR TO BE FLAT BLACK. SEE DETAIL G & E SHEET 14.
9. FURNISH AND INSTALL NEW TUBULAR STEEL HANDRAILS AND POST SYSTEMS WITH HANDRAILS TO BE RETAILORED ON BOTH SIDES OF EXISTING RAMP AND STEPS, COLOR TO BE FLAT BLACK. SEE DETAILS G & H SHEET 6.
10. (VOID EXERCISE FITNESS AREA & DECOMPOSED GRANITE) COMPACT AND LEVEL GRANITE TO EXISTING CONCRETE PAVING AND MOW CURE AT GRASS AREAS.
11. ANY DAMAGE TO EXISTING GRASS SHALL BE REPLACED BY THE CONTRACTOR WITH NEW BANDERA BERNOLA 500 GRASS FROM WEST COAST TURF. INSTALL 1" OF TOPSOIL LAYER AND RAKE IN NEW SEED TOPPING AMENDMENTS FROM AKENGAWS GREEN.
12. FURNISH AND INSTALL (3) THREE 8" DIAMETER SATIN CHROME DECK DRAINS WITH 9" DIAMETER SCHEDULE 40 (RAMP) PIPE, (2) 6" DIAMETER AND (1) 4" LOW SLURF SURFACE FRENCH DRAIN. SEE DETAIL F SHEET 14.
13. FURNISH AND INSTALL 3/4" DIAMETER ELECTRICAL CONDUIT RUN CONDUIT INSIDE SHADE STRUCTURE POST THROUGH REBAR TO CENTER OF CEILING. INSTALL CONCRETE ELECTRICAL PULLBOX WITH LOCKING COVER BY GRASS AREA AT LOCAL SHOP (SHOW IN PLAN). NOTE CONDUIT SHALL BE INSTALLED PER 2022 CALIFORNIA ELECTRICAL CODE (CEC).
14. FURNISH AND INSTALL NEW PRECAST CONCRETE TRAFFIC RATED ELECTRICITY HANDHOUSING BOX WITH STEEL COVER MARKED "ELECTRIC". INSTALL METAL LED FLUSH TO NEW ADJACENT CONCRETE PAVING. MANUFACTURER: JENSEN PRECAST. SIZE: 36" X 36" BOX MODEL: HPC080. STEEL COVER: H7406 (OR AGENCY APPROVED EQUALS). NOTE: ALL EXISTING ELECTRICAL WIRING AND CONDUIT SHALL REMAIN PROTECT IN PLACE. INSTALL PER ALL ELECTRICAL CODE REQUIREMENTS.



New playground and fitness equipment

New pool perimeter fencing

New 25' Picnic shelter

NOTES TO CONTRACTOR

1. FOR PUBLIC SAFETY CONCERNS THERE SHALL BE NO PUBLIC ACCESS TO THE SWIMMING POOL AND/OR POOL PATIO AREA. THE CONTRACTOR IS RESPONSIBLE AND PAY FOR THE EXPENSE OF A CALIFORNIA AND LOCAL BUILDING CODES COMPLIANT SECURITY FENCE AND GATES AROUND THE EXISTING SWIMMING POOL AT ALL TIMES DURING THE PROJECT UNTIL FINAL COMPLETION.
2. FURNISH AND PROVIDE ALL PRODUCTS, MATERIALS, EQUIPMENT AND LABOR TO INSTALL AND SECURE NEW METAL PICNIC SHADE STRUCTURE PER MANUFACTURER SPECIFICATIONS BY: POLYGON COMPANY, (OR AGENCY APPROVED EQUALS).
3. FURNISH AND PROVIDE ALL PRODUCTS, MATERIALS, EQUIPMENT AND LABOR TO INSTALL AND SECURE PICNIC TABLES / BENCHES PER MANUFACTURER SPECIFICATIONS BY: PARADISE VALLEY, (OR AGENCY APPROVED EQUALS).
4. FURNISH AND PROVIDE ALL PRODUCTS, MATERIALS, EQUIPMENT AND LABOR FOR STORAGE AND INSTALL AND SECURE ALL CITY PROVIDED PLAY EQUIPMENT SYSTEMS SEAT BENCHES, TRASH RECEPTACLES AND SIGNAGE PER MANUFACTURERS SPECIFICATIONS BY: INNOVATIVE PLAYGROUNDS COMPANY AND BUNGE COMPANY. NOTE: EMBLETTED ABOVE HAVE AN ESTIMATED ARRIVAL DELIVERY DATE OF JULY 26TH 2023.
5. FURNISH AND PROVIDE ALL PRODUCTS, MATERIALS, EQUIPMENT AND LABOR TO INSTALL GEOLAM MANUFACTURER PIP PREMIUM COLORS WITH EPDM RUBBER GRANULES AND ROBERTSON RECREATION SURFACES (BINDER AGENTS) FOR THE PLAYGROUND AREA AS NOTED ON THE CONSTRUCTION PLANS. (OR AGENCY APPROVED EQUALS).

NOTE: CONTRACTOR SHALL VERIFY AND STAKE LOCATE IN THE FIELD ALL UTILITY LINES INCLUDING 120V ELECTRICAL WIRING AND CONDUIT LINES PRIOR TO INSTALLATION OF NEW PAVING, PLAY GROUND EQUIPMENT AND PICNIC STRUCTURE.

NOTE: PARKING LOT IMPROVEMENTS TO BE PER SEPARATE PROJECT BY THE CITY PUBLIC WORKS DEPARTMENT.