

# EXHIBIT A



April 14, 2022

**Jessica Polidori**  
Associate Engineer  
City of Garden Grove  
13802 Newhope Street  
Garden Grove, CA 92843

**Subject: Proposal for On-Call Construction Management and Inspection Services  
For Various Water and Sewer Improvements Projects**

Dear Jessica:

On behalf of JIG Consultants (JIG), we are pleased to submit our proposal for On-Call Construction Management and Inspection Services for Various Water and Sewer Improvements Projects. JIG appreciates the opportunity to further strengthen our working relationship with the City of Garden Grove (City). We are committed to dedicating experienced staff to serve as an extension of the City's inspection staff in order to achieve success on your projects. Our in-house project team holds more than 150 years of combined experience in construction management and inspection services.

JIG is committed to providing competent, reliable, and knowledgeable construction managers and inspectors to support the City. Included in this proposal is JIG's approach presenting our understanding of your project needs.

- ▶ **Summary of Construction Management and Inspection Duties** – The approach includes a listing of typical construction management and inspection tasks, description of each duty, benefits to the City, and required deliverables.
- ▶ **In-House Staff Flexibility and Availability** – JIG will make a construction manager and/or inspector available at any given time. Back-up staff will be available in the event of emergencies and/or when a second inspector is required. For short term assignment, part-time construction managers and inspectors will be available to the City.

The proposal includes a listing of our team's availability as of the date of this proposal. The information provided is based on our current workload.

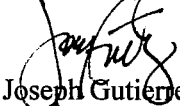
- ▶ **Previous City CM and Inspection Experience** – Our team recently completed three construction management and inspection services assignments, all of which were performed by the same project team members listed on this proposal. These projects vary in complexity and are listed on this proposal complete with the Contractor's name and contract amount. The three projects are also described in further detail in Section 2 of the proposal.

JIG invites the City to review our qualifications and related experience. JIG takes no exceptions to the terms of the Consultant Agreement included in the Request for Proposal. This proposal is valid up to 90 days from the date shown above.

Should you have any questions concerning our proposal, please do not hesitate to contact us.

Respectfully Submitted,

**JIG CONSULTANTS**

  
Joseph Gutierrez, PE, PMP  
Principal-in-Charge / Construction Manager

Enc.

318 West Katella Ave, Suite A  
Orange, CA 92867

Office (714) 978.4407  
Fax (714) 908.4654  
www.jigconsultants.com

# TABLE OF CONTENTS

---

Cover Letter

Section 1 - Scope of Services

- ▶ Project Understanding
- ▶ Scope of Services
- ▶ Construction Management Approach

Section 2 - Statement of Qualifications

- ▶ Relevant Project Experience

Section 3 - Project Team

- ▶ Project Organization Chart
- ▶ Project Team
- ▶ Resumes

Section 4 – Statement of Availability

Section 5 – Rate Schedule

### PROJECT UNDERSTANDING

In an effort to supplement City of Garden Grove (City) inspectors, this proposal is to provide construction management and inspection services on an on-call basis for various water and wastewater capital improvements projects, rehabilitation and replacement projects, and customer development projects.

The City anticipates a steady stream of construction projects in the upcoming years. JIG Consultants (JIG) is prepared to supplement and function as an extension to City staff on an as-needed basis. It is our understanding the schedule for construction will dictate the workload. As such, the workload will vary over time with periods of no inspection and others where two inspectors may be necessary. JIG will remain flexible to cover the changing workload requirements and will make every effort to minimize impacts to the capital improvement project budgets. Projects anticipated under this endeavor are sewer main improvements, water main improvements, water facility improvements, and development projects.

The following projects are scheduled in the short term and could potentially require supplementary construction management and inspection support:

- ▶ Sewer System Rehabilitation Phase I – Sewer Main Replacement Project (160 working days)
  - Replacement of approximately 5,100 feet of 6-inch VCP sewer with 8-inch VCP sewer
  - Miscellaneous spot repairs
- ▶ Sewer Improvements Project – Lampson Avenue and Lamplighter (100 working days)
  - Construction of approximately 1,400 feet of 10-inch VCP sewer main
- ▶ Water Improvements Project for Partridge / West Project (45 working days)
  - Construction of approximately 1,600 feet of 12-inch PVC waterline
  - Construction of approximately 600 feet of 8-inch PVC waterline
  - Abandonment of approximately 2,000 feet of 6/8-inch asbestos cement waterline
- ▶ Water Improvement Project for Orangewood Avenue and Dale Street (100 working days)
  - Construction of approximately 1,600 feet of 12-inch PVC waterline
  - Construction of approximately 6,000 feet of 8-inch PVC waterline

### SCOPE OF SERVICES

JIG Consultants' (JIG) goal is to provide value-added services that yield innovative yet practical solutions to promote cost-effective and timely delivery, while protecting and enhancing the value of your infrastructure. The Principal-in-Charge, Joseph Gutierrez, will coordinate with in-house and City staff to ensure technical viability, monitor schedules/budgets, and assure the entire project team integrates seamlessly to deliver the best possible product. Our staff has the proven ability to partner with municipal clients to assess priorities in order to keep your project on schedule and under budget.

### CONSTRUCTION MANAGEMENT APPROACH

JIG's involvement during construction will provide the City with the vehicle to ensure the requirements of the contract documents are met. Further, our involvement will partner City staff with experts in dealing with Contractors and administering the project in an organized and efficient manner.

The following table itemizes construction management and inspection tasks of a typical project. The tables provide a detailed description of each task with benefits listed as well as deliverables.

<b>CITY OF GARDEN GROVE ON-CALL CONSTRUCTION MANAGEMENT AND INSPECTION SERVICES</b>			
<b>TASK ITEM</b>	<b>DESCRIPTION</b>	<b>BENEFITS</b>	<b>DELIVERABLE</b>
Pre-Construction Meeting	Attend pre-construction meeting to discuss project specifics.	Introduction to project team members and discuss construction communication and execution	Meeting Agenda and Minutes
Shop Drawings / Submittals	Log, track, and review submittal comments received from Design Engineer for conformance to contract documents.	Allows timely approval of all submittals needed to maintain the schedule	Submittals and Approval Log
	Prepare list of expected submittals and compare to Contractor's list.	Itemizes all required submittals and communicates expectations to Contractor	List of Submittals
	Review vendor and lab reports, certifications, and material test inspections	Correlates reports with the intentions and requirements of the Contract Documents	-
	Verify Contractor has submitted certified payroll to DIR website.	Adheres to DIR requirements for prevailing wages	Certified Payroll Documents
Consultations and Meetings	Review Design Engineer Responses to RFI's and Include in Project Log.	Clarifies intent of construction plans / Documents directives which may result in potential changes to Scope of Work	RFI Responses and Log
	Attend project update meetings to discuss the schedule, change orders, new issues, submittal status, requests for information (RFI), safety, deficiencies, etc.	Promotes effective communications among all stakeholders, with an official record	Meeting Agenda and Minutes
Schedules	Review Contractor's 3-week look ahead schedule and construction schedule	Ensures adherence to schedule and planned completion date	-
Change Orders	Review CO's proposed by the Contractor. Recommend needed CO's	Ensures that only necessary CO's are issued, eliminating unnecessary costs; ensures CO's are written to comply with the applicable contract administration requirements	Change Orders and a CCO Log
	Prepare independent cost opinions of costs for changes.	Verifies Contractor's CO requests are accurate for costs.	-
	Document Force Account Work	Provides a basis and record for T&M work.	T&M Tickets
	Document disputed work.	Tracks Contractor's time and materials for disputed work for negotiations.	Disputed Work Time and Material Summary
	Review all time extension requests from the Contractor	Verifies Contractor's CO requests are accurate for time extensions.	-
Construction Inspection	Observe, document, and determine the acceptability of the construction work.	Ensures the requirements of the contract documents are being met.	-
	Prepare Daily Inspection Reports	Documents site and weather conditions, measures taken by the Contractor, labor, equipment and materials used, quantity of work performed, and major incidents/safety violations.	Daily Inspection Report

	Photograph work for conditions, disputed work, and extra work.	Provides a visual record and description of work for use on potential conflicts, and progress payments.	Photo Log
	Report unsafe working conditions.	Maintain conformance to OSHA regulations.	-
	Coordinate, observe, and document all required testing.	Ensures all testing per the contract documents are completed	-
	After completion of the work, prepare a work completion punch list to identify items that need attention prior to final acceptance.	Confirms work compliance	Punch List
	Prepare Bi-Weekly Statement of Working Days	Provides a summary of completed work.	Bi-Weekly Statement of Working Days
Materials Testing (City Consultant)	Coordinate, observe, and document material testing for concrete, backfill and pavement.	Ensures soils and testing per contract documents are completed	Testing Completion Documents and Checklist
Construction Surveying (City Consultant)	Establish survey control points. Coordinate with Contractor and City for staking of proposed improvements.	Confirms layout of proposed work in reference to project benchmark	-
Pay Requests	Assist in review of Contractor's payment requests, verify completed quantities.	Ensures Contractor is paid only for completed, accepted work	Certified payment requests
Project Close-Out	After verifying the work is acceptable, Inspector will submit to City a written recommendation of final acceptance	Confirms work completion according to the Contract Documents	Close-Out Documents and Flash Drive
As-Builts	Review Contractor's redline drawings, incorporate into the final "As-Built" redline plans.	Confirms that Contractor is updating his as-built set throughout construction.	"As-Built" redline plans (Hard Copy and Digital)

## In-House Staff Flexibility and Availability

JIG will have the project team ready to serve the City following the general approach listed below.

- ▶ JIG will make one of the construction managers and/or inspectors available on any given day. Upon receiving a task order request, the Construction Manager will immediately meet with City staff to discuss the project specifics, level of involvement, and duration. The Construction Manager and Inspector will be ready to mobilize and start the work as early as the following week.
- ▶ Once a construction manager and inspector are assigned to a project, they will be committed throughout the project duration and will not be replaced without City approval.
- ▶ In the unlikely event that a Construction Manager or Inspector is not available, JIG will assign a replacement to cover on a temporary basis until the assigned Construction Manager or Inspector is available full time. Further, the Principal-in-Charge can also serve as the temporary construction manager and inspector as he has the background and knowledge to serve under these capacities.
- ▶ For short term assignments, we will assign part-time construction management and inspection staff. These individuals are just as qualified as those presented but operate under a part-time employment contract with JIG. In essence, when there is no work, these individuals either look for work elsewhere or remain retired.

As of the date of this proposal, our current staff availability is presented in Section 4.

## Previous City of Garden Grove CM and Inspection Experience

JIG recently completed three construction management and inspection services assignments for the City of Garden Grove, all of which were performed by the same project team members listed on this proposal.

- ▶ West Haven Reservoir Rehabilitation Project  
City Project Manager: Rebecca Li, PE  
JIG Contract Amount: \$238,600  
Contractor: Pacific Hydrotech Corporation  
Project Construction Contract: \$4,464,635
  
- ▶ Magnolia Reservoir and Booster Pump Station Rehabilitation Project  
City Project Manager: Rebecca Li, PE  
JIG Contract Amount: \$352,900  
Contractor: Pacific Hydrotech Corporation  
Project Construction Contract: \$3,204,880
  
- ▶ Orangewood Sewer Replacement Project  
City Project Managers: Myung Chun, PE  
JIG Contract Amount: \$83,000  
Contractor: Mladen Buntich Construction Company  
Project Construction Contract: \$708,835

See Section 2 for additional information on the above City projects.

## Section 2 – Statement of Qualifications

### RELEVANT PROJECT EXPERIENCE

Provided on the following pages are JIG qualifications for services similar to those required for this project. Each project description includes a client reference whom we encourage the City to contact.

#### West Haven Reservoirs Rehabilitation

City of Garden Grove

##### CLIENT REFERENCE

City of Garden Grove  
Rebecca Li, PE  
Assistant City Engineer  
13802 Newhope Street  
Garden Grove, CA 92840  
(714) 741-5562

##### TEAM INVOLVEMENT

Joseph Gutierrez, PE  
Construction Manager  
  
Omar Abutaleb, PE  
Construction Inspector

##### COMPLETION YEAR

2019

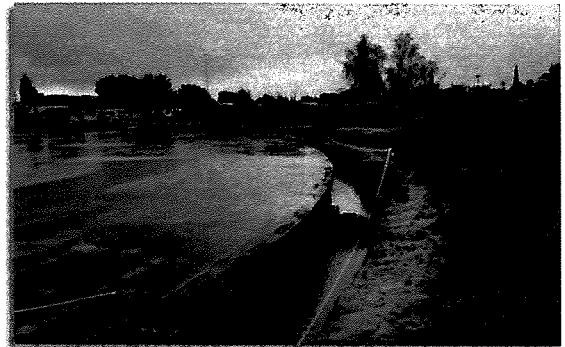
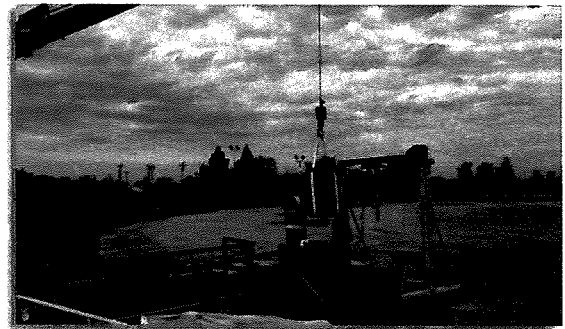
##### CONSTRUCTION COST

\$ 4.4M

##### CONTRACTOR

Pacific Hydrotech Corporation

The West Haven Reservoirs Rehabilitation Project was for various repair work on two buried pre-stressed concrete 10 million-gallon reservoirs located at West Haven Park. The repair work consisted of crack repair, spall repair, joint repair, construction of seismic curb, roof waterproofing, rust spot repair, and the addition of a fall protection system for the reservoirs. Site improvements included replacing two 16-inch butterfly valves, flap gates, installation of electrical conduits for future intrusion alarms, removal and replacement of PCC and AC concrete pavement within the West Haven Pump Station site, construction of a steel picket perimeter fence on the west and north sides of



the park, curb cut and driveway approach improvements, construction of concrete pads for park benches, furnishing and installation of park benches, and restoration of turf and irrigation facilities disturbed during construction.

The project was constructed in two phases. The first phase included all work associated with the West Haven East Reservoir. The second phase included all work associated with the West Haven West Reservoir. With two interconnected reservoirs, there was a special emphasis on isolation, draining, and cleaning of one reservoir while keeping the second reservoir in operation.

JIG provided construction management and full-time inspection services for the West Haven Reservoirs Rehabilitation Project. JIG assigned a professional engineer to be the project inspector.



# Magnolia Reservoir and Booster Pump Station Rehabilitation

City of Garden Grove

## CLIENT REFERENCE

City of Garden Grove  
Rebecca Li, PE  
Assistant City Engineer  
13802 Newhope Street  
Garden Grove, CA 92840  
(714) 741-5562

## TEAM INVOLVEMENT

Joseph Gutierrez, PE  
Construction Manager

Jeff Wilson  
Construction Inspector

## COMPLETION YEAR

2022

## CONSTRUCTION COST

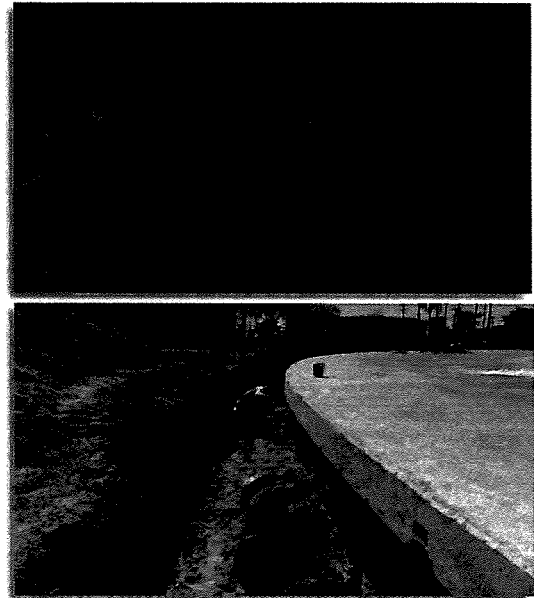
\$ 3.2M

## CONTRACTOR

Pacific Hydrotech Corporation

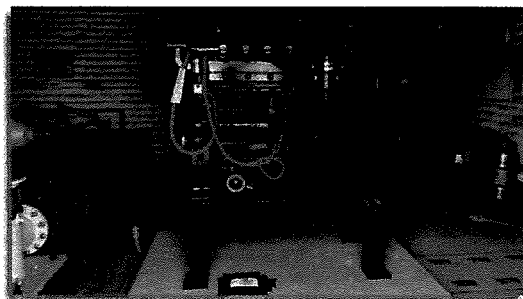
The Magnolia Reservoir and Booster Pump Station Rehabilitation Project was for various repair work on one buried pre-stressed concrete 5-million gallon reservoir and booster pump station, located at Magnolia Park. The reservoir rehabilitation work consisted of :

- ▶ crack repair,
- ▶ spall repair,
- ▶ joint repair,
- ▶ rust spot repair,
- ▶ column crack repair,
- ▶ construction of seismic curb,
- ▶ cleaning of grease debris on reservoir walls,
- ▶ air vent and access hatch repairs
- ▶ roof slab waterproofing, and
- ▶ removal and reconstruction of roof slab/wall joint sealant.



The booster pump station rehabilitation work included:

- ▶ removal and replacement of natural gas engine complete with lubrication, gas line, cooling, radiator, and exhaust assemblies,
- ▶ removal and replacement of vertical turbine pump with right angle gear drive
- ▶ reconstruction of pump discharge assembly
- ▶ upgrades to building roof, HVAC, and doors
- ▶ upgrades to Murphy Control Panel, and
- ▶ slab concrete repairs.



Miscellaneous site improvements consisted of:

- ▶ resurfacing and renewing tennis court accessories,
- ▶ upgrades to reservoir sump pump and drainage vault,
- ▶ upgrades to drainage vault including flap gate,
- ▶ upgrades to site lighting and conduits,
- ▶ construction of additional slab around booster station,
- ▶ construction of additional sidewalks, fences, bollards, gates, and
- ▶ extension of existing asphalt concrete parking lot.

JIG provided construction management and full-time inspection services for a project duration of six months.

# Large Potable Water Valves Replacement Redondo Avenue and Kilroy Airport Way, Phase 1

Long Beach Water Department

## CLIENT REFERENCE

Long Beach Water Department  
Carolina Avendano  
Engineering Associate  
1800 East Wardlow Road  
Long Beach, CA 90807  
(562) 570-2334

## TEAM INVOLVEMENT

Joseph Gutierrez, PE  
Construction Manager

Omar Abutaleb, PE  
Construction Inspector

Donald Romine  
Construction Inspector

## COMPLETION YEAR

2020

## CONSTRUCTION COST

\$ 1,534,000

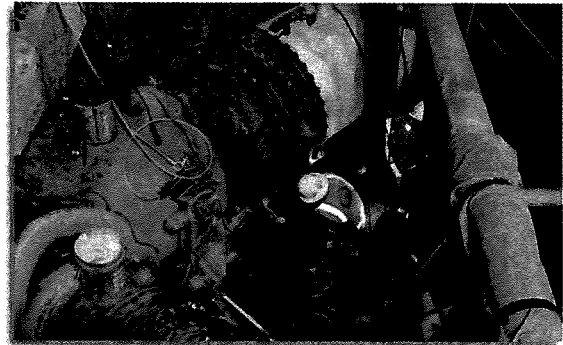
## CONTRACTOR

Teichert Utilities Group

JIG provided construction management and inspection services for the removal of four large gate valves at the intersection of Redondo Avenue and Kilroy Airport Way. The project replaced one 42-inch gate valve, one 30-inch gate valve, and one 24-inch gate valve (with butterfly valves of the same size) in the public right-of-way. The project also replaced one 42-inch butterfly valve with an electric actuator inside the Long Beach Groundwater Treatment Plant. This project was high-profile and a critical improvement to Long Beach Water Department's potable water treatment and

distribution system. These large valves are key components of the Groundwater Treatment Plant main discharge to the Alamitos storage reservoirs. Construction was carefully coordinated not only with public works but also with the Groundwater Treatment Plant operators.

The project required full-time inspection for a 6-month period, development of Groundwater Treatment Plant shut-down to isolate the large valves, and 214 continuous hours of inspection to minimize downtime of the plant.



# Large Potable Water Valve Replacement – Bellflower and Stearns

## Long Beach Water Department

### CLIENT REFERENCE

Long Beach Water Dept.  
Carolina Avendano  
Engineering Associate  
1800 East Wardlow Road  
Long Beach, CA 90807  
(562) 570-2334

### TEAM INVOLVEMENT

Joseph Gutierrez, PE  
Resident Engineer

Donald Romine  
Construction Inspector

### COMPLETION YEAR

2018

### CONSTRUCTION COST

\$333,600

### CONTRACTOR

Doreck Construction

JIG provided construction management and full-time inspection for the Large Potable Water Valve Replacement at the intersection of Bellflower Boulevard and Stearns Street. The project included removal of an existing 30-inch gate valve with bypass valve and replacement with a 30-inch butterfly valve, construction of cement mortar lined and coated steel pipe and butt-straps, construction of one chlorination assembly, installation of one blow-off assembly, and associated piping, fittings, and accessories. To isolate the existing gate valve, two temporary line stops were installed on the existing 30-inch SCC pipe.

Other project components included installation and maintenance of a temporary bypass to the MVP Restaurant, a complicated 8-phase traffic control and mitigation plan, trenching, excavation, backfill, compaction, chlorination, dechlorination, hydrostatic testing, bacteriological testing, pavement restoration, and site cleanup.

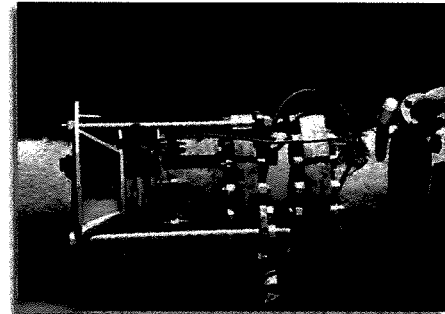
The intersection of Bellflower Boulevard and Stearns Street was a difficult area for construction with heavy traffic volumes. The area was comprised of high-volume retail businesses and is one block north of California State University Long Beach. The Resident Engineer spearheaded all communications between the Contractor, City staff, and the community. The Resident Engineer was available 24/7 to the public.

## Dryden Street Water Main Replacement

### Elsinore Valley Municipal Water District

JIG performed construction management and inspection services for the Dryden Street Water Main Replacement Project, which included construction of 800 lineal feet of 8-inch PVC waterline on Dryden Street in the City of Lake Elsinore, connections to the existing system in two locations, construction of fire hydrants, and pavement restoration.

The project construction plans were prepared using GIS information without a topographic survey. JIG's involvement included establishing controls, confirming the horizontal and vertical alignment of the pipeline, and construction staking. JIG worked with the Contractor for field adjustments on site and to resolve issues experienced during hydrostatic testing of the pipeline.



# Orangewood Avenue Sewer Improvement Project

## Garden Grove Sanitary District

### CLIENT REFERENCE

Garden Grove Sanitation District  
Rebecca Li, PE  
Senior Civil Engineer  
13802 Newhope Street  
Garden Grove, CA 92840  
(714) 741-5562

### TEAM INVOLVEMENT

Joseph Gutierrez, PE  
Construction Manager

Donald Romine  
Construction Inspector

Juan Torres  
Construction Inspector

### COMPLETION YEAR

2019

### CONSTRUCTION COST

\$708,000

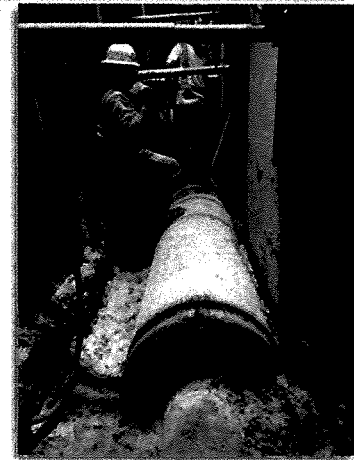
### CONTRACTOR

Mladen Buntich Construction

At the request of a high-volume customer located at 7351 Orangewood Avenue (House Foods), Garden Grove Sanitary District (District) upsized approximately 850 feet of existing 10-inch VCP sewer to a 15-inch VCP sewer, on Orangewood Avenue to the Western Avenue intersection, where it discharged into an existing Orange County Sanitation District (OCSD) manhole. The OCSD manhole is located on the southeasterly quadrant of the Orangewood/Western Avenue intersection.

The Orangewood Avenue Sewer Improvements consisted of the following:

- ▶ Installation of 10-inch and 15-inch extra strength VCP sewer pipe
- ▶ Abandonment of approximately 760 feet of existing VCP sewer
- ▶ Removal and disposal of approximately 60 feet of existing VCP sewer
- ▶ Removal of three existing manholes
- ▶ Construction of one 48-inch diameter lined manhole and four 60-inch diameter lined manholes
- ▶ Connection to and modifications to an existing OCSD manhole
- ▶ Reconnection and reconstruction of existing sewer lateral connections
- ▶ Groundwater dewatering (depth to groundwater estimated at 12 feet below ground surface)
- ▶ Maintaining existing sewer flows during construction
- ▶ Reconstruction of a 20-foot segment of existing waterline near the intersection
- ▶ Traffic control
- ▶ Trench pavement restoration and resurfacing
- ▶ Traffic striping, installation of raised pavement markers, and replacement of traffic loops



JIG provided full time construction management and inspection services for the Orangewood Avenue Sewer Improvement Project. Traffic control was coordinated with the Cities of Garden Grove and Stanton. Duties included review of shop drawings, responses to requests for information, conformance to contract documents, observation of construction activities, processing of monthly payment applications, and negotiations with the Contractor for force accounts.

# Sanitary Sewer Rehabilitation and Replacement Program - 1

## Long Beach Water Department

### CLIENT REFERENCE

Long Beach Water Department  
Valeri Karakanov, PE  
Senior Engineer  
1800 East Wardlow Road  
Long Beach, CA 90807  
(562) 570-2346

### TEAM INVOLVEMENT

Joseph Gutierrez, PE  
Resident Engineer  
  
Donald Romine  
Construction Inspector

### COMPLETION YEAR

2018

### CONSTRUCTION COST

\$575,000

### CONTRACTOR

NuLine Technologies

JIG performed construction management and inspection services for the first of several sanitary sewer rehabilitation and replacement projects for Long Beach Water Department.

The Sanitary Sewer Rehabilitation Replacement Program 1 consisted of point repairs of several existing sewers, point lining repairs of existing sewers, top hat of existing services, and installation of cured-in-place pipe (CIPP) within existing sewer mains.



The work for the project shall include, but not be limited to, the following:

- ▶ Utility potholing;
- ▶ Temporary bypass facilities and sewage spill prevention plan;
- ▶ Root ball removals;
- ▶ Cleaning of existing sewer piping;
- ▶ Point repair of existing 8-inch sewer pipe for a total of 156 lineal feet;
- ▶ Lining point repair of existing 8-inch sewers for a total of 29 lineal feet;
- ▶ Installation of CIPP lining for 8-inch, 10-inch and 12-inch pipe for a total of 7,065 lineal feet;
- ▶ Re-establishment of existing sewer service laterals (point repairs and lining);
- ▶ “Top Hat” repairs at 22 locations;
- ▶ Repair of intruding laterals;
- ▶ Post installation pipeline testing;
- ▶ Pre- and post-construction CCTV inspection;

Construction management and inspection services were provided to coordinate with review of shop drawings, responses to requests for information, ensure conformance to contract documents, and observe construction activities. The construction manager and inspector assisted in public communication with customers and businesses that were affected by the construction. In certain areas, construction was scheduled at night to reduce disruption to customers.

# South Long Beach Sewer Improvement Project

Long Beach Water Department

## CLIENT REFERENCE

Long Beach Water Department  
Jinny Huang, PE  
Manager of Engineering  
1800 East Wardlow Road  
Long Beach, CA 90807  
(562) 570-2346

## TEAM INVOLVEMENT

Joseph Gutierrez, PE  
Resident Engineer  
  
Juan Torres  
Construction Inspector

## COMPLETION YEAR

2017

## CONSTRUCTION COST

\$968,980

## CONTRACTOR

Sancon Technologies, Inc.

JIG provided construction management and inspection services for the South Long Beach Sewer Improvement Project. The construction manager and inspector served as an extension of the Long Beach Water Department inspection staff.

The project included the following:

- ▶ Replacing 200 lineal feet of existing 8-inch sewer;
- ▶ Point repairs of existing 8-inch sewer at ten various locations;
- ▶ Shelf repair on 9 manholes;
- ▶ Rehabilitation of 2 manholes (Sancon Epoxy);
- ▶ Segment lining point repairs of existing 8-inch sewer at 17 various locations;
- ▶ 17,200 lineal feet of cured-in-place pipe lining of existing 8-inch, 10-inch and 12-inch sewers.
- ▶ Reconnection of existing laterals after point repairs and lining work;
- ▶ Construction of “top-hat” lateral repair

Construction management duties included review of shop drawings, responses to requests for information, administer progress status meetings, ensure conformance to contract documents, preparation of field orders, negotiation and processing of change orders, review and processing of progress billing reports.

JIG provided full-time inspection for a 4-month period. Inspector duties included construction observation, adherence to OSHA regulations, assistance with public notifications, concrete mix inspection and testing, preparation of daily inspection reports, and documented through daily photographs.



# Construction Inspection / Staff Augment Services Miscellaneous Capital Improvement Projects

## Lake Arrowhead Community Services District

### CLIENT REFERENCE

Lake Arrowhead Community Services District  
Aida Hercules-Dodaro, PE  
District Engineer (Retired)  
27307 State Highway 189  
Blue Jay, CA 92317  
(909) 744-7096

### TEAM INVOLVEMENT

Joseph Gutierrez, PE  
Principal-in-Charge

### COMPLETION YEAR

2020

### CONSTRUCTION COST

CIP Project # 193  
\$ 351,000

CIP Project # 196  
\$ 424,000

CIP Project #212  
\$ 177,000

### CONTRACTOR

CIP Project # 193  
TK Construction

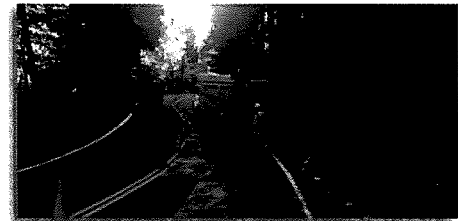
CIP Project # 196  
Mike Pritch and Sons /  
Sancon Technologies, Inc.

CIP Project # 212  
Trinity Construction

JIG provided staff augment service for Lake Arrowhead Community Services Department to perform full-time construction inspection of miscellaneous capital improvement projects in 2020. The projects are as follows:

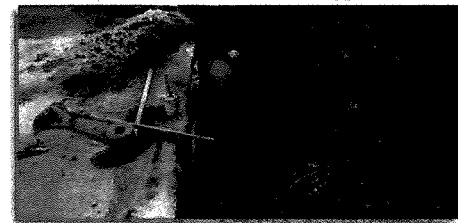
### CIP Project #193 - Burnt Mill Water Line Replacement

Installation of 617 lf of 10" PVC C-900 water main with restrainers on every joint. Project included hot tapping of existing 12" CMLC water main and installation of two 10" gate valves. The project was mostly in Highway 189 and under Caltrans jurisdiction.



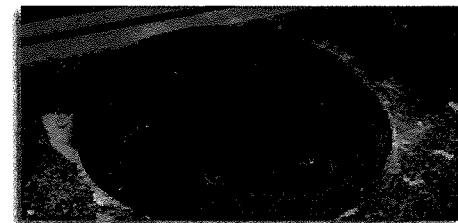
### CIP Project #196 - Palisades Sewer Rehabilitation/Replacement Phase 3

Removal of 1,560 lf of 6" sewer main and replacement with 8" PVC SDR-35 pipe while connecting all existing sewer laterals and keeping the existing sewer main active as construction was in progress. The project also included CIPP lining of 350 lf existing sewer pipe, rehabilitation of five existing manholes and installation of three new 48" diameter manholes. The project was performed on very narrow and curvy roads and within easements between backyards. Coordinated with utility companies and residents to get this project completed with minimal extra costs for the District.



### CIP Project #212 - Manhole Inflow Reduction Project

Removal and replacement of 174 sewer manholes and 17 cleanouts and raising facilities to grade. The project was performed within San Bernardino and Caltrans right-of-way.



# Third and Forest Pipeline Project

## City of Laguna Beach – Water Quality Department

### CLIENT REFERENCE

City of Laguna Beach  
David Shissler, PE  
Director of Water Quality  
505 Forrest Avenue  
Laguna Beach, CA 92651  
(949) 497-0328

### TEAM INVOLVEMENT

Joseph Gutierrez, PE  
Construction Manager

Donald Romine  
Construction Inspector

Juan Torres  
Construction Inspector

### COMPLETION YEAR

2016

### CONSTRUCTION COST

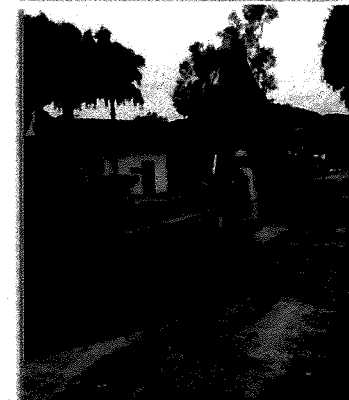
\$2.7 Million

### CONTRACTOR

Mike Prlich and Sons

JIG was contracted by the City of Laguna Beach for construction management and inspection duties for this high-profile project in the downtown area of the city, which included the following construction work:

- ▶ Abandonment of approximately 1,600 lineal feet of 18-inch trunk sewer on Loma Terrace including four manholes;
- ▶ Abandonment of approximately 1,350 lineal feet of 15-inch inverted siphon on Mermaid Street including two manholes;
- ▶ Removal of approximately 750 lineal feet of 8-inch sewer on Third Street including four manholes;
- ▶ Construction of approximately 1,280 lineal feet of 18-inch sewer in the Lumber Yard Parking Lot and Third Street/Forest Avenue, from the existing Laguna SOCWA Lift Station to Mermaid Street, including ten new manholes;
- ▶ Jacking and boring of a 24-inch steel casing under the Third Street hill;
- ▶ Construction of 160 lineal feet of 18-inch sewer on Third Street, southeast of Mermaid Street, including two new manholes; and
- ▶ Construction of miscellaneous 6-inch sewer for reconnection to existing manholes near City Hall and Loma Place.
- ▶ Cured-in-place lining of existing 18-inch VCP sewer.
- ▶ Rehabilitation of existing 20-foot deep sewer manhole.



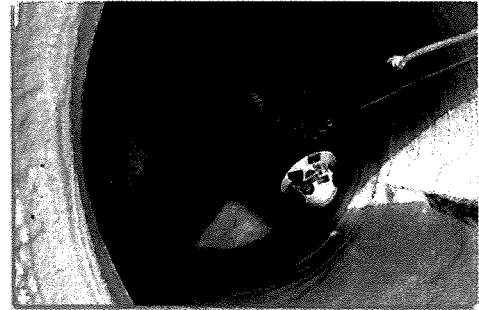
The Construction Manager was involved with public relations and provided assistance with development of the project website, project hotline, and newspaper project advertisements. The Construction Manager made several presentations to city council for updates on construction progress. The Construction Manager coordinated with the police department, fire department, community services, public works department, City Senior Center, Caltrans, and Laguna Beach County Water District.



# Collier Avenue and Pasadena Street Manhole Rehabilitation

Elsinore Valley Municipal Water District

The Collier Avenue and Pasadena Street Manhole Rehabilitation and Replacement Project rehabilitated 14 existing manholes and replaced one existing 48-inch manhole with a 60-inch manhole. Manhole work included replacement of cones, grade rings, frames and lids. Manhole interiors were blasted with high-pressure water, removed debris, concrete work on manhole shafts, shelf and channel. The manhole interiors were then lined with epoxy primer and polyurethane compound.



Work included traffic control, sewer bypass, and water pollution prevention/control. All work was completed during normal working hours. Some areas required acquisition of a Caltrans encroachment permit.



Construction management and full-time inspection was provided during construction to coordinate with review of shop drawings, responses to requests for information, ensure conformance to contract documents, and maintain quality control through NACE certified inspection of manhole interior coating. The Construction Manager assisted the District with Contractor change order and field order requests.

# Cornerstone Church Sewer Extension

Elsinore Valley Municipal Water District

JIG performed construction management and inspection services for the Cornerstone Church Sewer Extension Project, which included construction of 1,800 lineal feet of 8-inch sewer pipelines, including 8 lined manholes. The project extended the existing sewer collection system to serve the Cornerstone Church located on Monte Vista Drive in the City of Wildomar.

JIG committed a public relations officer (Alliance) to oversee communication with the public using a website, project hotline, passing flyers, and administering a town hall meeting.

Subsurface conditions of cohesionless sand presented difficulties during excavation and trenching. JIG coordinated with the City of Wildomar inspector, EVMWD Senior Engineer and Engineering Manager, and the Contractor to develop an approach to minimize sloughing of material into the trench and to protect the existing adjacent pavement. JIG worked with EVMWD staff to curtail added expenditures resulting from the unknown site conditions.



## Section 3 – Project Team

### PROJECT ORGANIZATION CHART

The Organization Chart to the right identifies JIG’s proposed key personnel and their respective project responsibilities. As demonstrated below, each of our team members are highly qualified in their duties and offers the experience required to execute this project on an as-needed basis.

### PROJECT TEAM

The following are brief descriptions of each JIG team member’s qualifications.

#### Joseph Gutierrez, PE – Principal-in-Charge / Construction Manager

Mr. Gutierrez possesses over 30 years of experience in planning, design and construction of water and wastewater facilities for various municipalities as well as the private sector. As President, he bears responsibility for all products and services performed by JIG Consultants. Throughout his career, he served as Senior Project Manager for the design and construction of pipelines, pumping facilities, storage reservoirs, and sewer facilities in the Southern California region. Mr. Gutierrez also serves as Construction Manager, Resident Engineer, and part-time inspector for a variety of construction projects related to water and wastewater improvements.

Mr. Gutierrez is a fully certified Project Management Professional (PMP), knowledgeable in every facet of business and project management per the Project Management Body of Knowledge, advocated by the Project Management Institute (PMI).

Mr. Gutierrez served as Construction Manager for three successfully completed City projects: West Haven Reservoir Rehabilitation Project, Magnolia Reservoir and Booster Pump Station Rehabilitation Project, and Orangewood Sewer Improvement Project.

#### Omar Abutaleb, PE – Construction Manager

Mr. Abutaleb has over 25 years of experience in a wide variety of engineering and construction projects. His diversity of knowledge and expertise was attained through years of service with both public agencies and private sector companies. While engaged at these agencies or firms, Mr. Abutaleb managed the development of numerous PS&E packages for various transportation projects including streets, water and sewer lines, storm drain lines and their structures, traffic signals, signing and striping, street lighting and traffic handling plans. During his employment with the City of Glendale, he coordinated the improvements for the Glendale Train Station, the Civic Auditorium Parking Structure and the Maryland Avenue Parking Structure. He has extensive project management and construction management experience in the building of large, complex, multi-phase developments having recently successfully completed work for the Kingdom of Saudi Arabia’s new Student Housing, encompassing the construction of 22 four-level concrete apartment buildings (88,000 square meters of Building Area) at the King Abdullah University of Science and Technology (KAUST.)

Mr. Abutaleb has an excellent knowledge of the Standard Specifications for Public Works Construction “The Green Book”, and the Caltrans Standard Plans and Specification making him an indispensable resource on all Capital Improvement Projects. Mr. Abutaleb’s degree in engineering and construction knowledge and experience is exceeded only by his professionalism and communication skills in dealing with people at all levels of responsibility and all ethnic and cultural backgrounds.

Mr. Abutaleb was Resident Engineer for a 6-month period performing management and full-time inspection duties for the West Haven Reservoir Rehabilitation Project.



**GARDEN GROVE**

CITY OF GARDEN GROVE

**Jessica Polidori**  
Associate Engineer

PRINCIPAL-IN-CHARGE

**Joseph Gutierrez, PE**

JIG STAFF

**Joseph Gutierrez, PE**  
**Omar Abutaleb, PE**  
Construction Managers

**Juan Torres**  
**Donald Romine**  
**Jeff Wilson**  
Construction Inspectors

## Juan Torres – Construction Inspector

Mr. Torres has more than 30 years of experience as a construction inspector and quality assurance/quality control (QA/QC) monitor for a variety of construction projects to verify conformance with project plans and specifications.

As a QA/QC monitor, Mr. Torres has worked on a variety of public works projects involving mass grading activities, trench backfilling, pipeline and pavement installation, slope stabilization, foundation preparation and installation, oriented-drilling, and field instrumentation for construction and post-construction monitoring. He has also performed both construction supervision and QA/QC functions for several public works, landfills and contaminated material remediation projects including fill control, clay liner and clay caps testing, and concrete and rebar inspection.

Mr. Torres served as a full-time inspector for a 4-month period for the City's Orangewood Sewer Improvement Project.

## Donald Romine – Construction Inspector

Mr. Romine has over 30 years of experience in the construction inspection of water and wastewater facilities. This experience encompasses pipelines, reservoirs, pump stations, wells, street improvements, and other public works projects. He has been responsible for QA/QC monitoring of construction activities, preparing daily construction inspection reports and documentation, verifying compliance with plans and specifications, ensuring testing protocol is satisfactorily conducted, review of progress payment applications, tracking material quantities, maintaining record drawings, conducting final inspections, and generating final punch list.

## Jeff Wilson – Construction Inspector

Mr. Wilson has more than 30 years of experience as a construction manager and inspector focused on water, environmental, and geotechnical engineering construction projects. His work history includes employment experience with numerous engineering and construction companies. For a three year period, he served in the operations and maintenance department for Mesa Consolidated Water District servicing natural gas engines, pumps, and reservoirs. He also served as a Construction Manager for Advanced Construction Technologies.

Mr. Wilson has taken on a full range of responsibilities in construction including management, inspection, field testing and coordination with clients and other project stakeholders. He is well versed and experienced with concrete construction, masonry construction, soils inspection, welding, servicing and operations of mechanical equipment, and pipeline construction.

Mr. Wilson served as a full-time construction inspector for a 6-month period for the Magnolia Reservoir and Booster Pump Station Rehabilitation Project.

# Joseph Gutierrez, PE

## Principal-in-Charge / Construction Manager

### REGISTRATION

CA/Professional  
Engineer/Civil/#55604

AZ/Professional  
Engineer/Civil/#37808

### EDUCATION

1991/BS/Civil  
Engineering/University of  
California, Irvine

Mr. Gutierrez possesses over 30 years of experience in planning, design and construction of water and wastewater facilities for various municipalities as well as the private sector. As President, he bears responsibility for all products and services performed by JIG Consultants. Throughout his career, he served as Senior Project Manager for the design and construction of pipelines, pumping facilities, storage reservoirs, and sewer facilities in the Southern California region. Mr. Gutierrez also serves as Construction Manager, Resident Engineer, and part-time inspector for a variety of construction projects related to water and wastewater improvements.

Mr. Gutierrez is a fully certified Project Management Professional (PMP), knowledgeable in every facet of business and project management per the Project Management Body of Knowledge, advocated by the Project Management Institute (PMI).

## Projects

### City of Garden Grove Projects

**CM and Inspection Services for Magnolia Reservoir and Booster Pump Station Rehabilitation, City of Garden Grove, CA:** Construction Manager for the rehabilitation of one 5 MG prestressed buried concrete reservoirs located at Magnolia Park in the City of Garden Grove. Project duties included coordination with project stake holders (City, Design Engineer, Contractor, Parks Department, etc), reviewing shop drawings and responding to RFI's, administering progress status meetings, reviewing progress pay applications, and negotiations for T&M work. Project construction included structural rehabilitation inside and outside of reservoir, construction of an interior seismic curb, waterproofing the exterior top slab, replacing existing vertical turbine pump, and replacing the existing natural gas engine.

**CM and Inspection Services for West Haven Reservoirs Rehabilitation, City of Garden Grove, CA:** Construction Manager for the rehabilitation of two 10 MG prestressed buried concrete reservoirs located in West Haven Park in the City of Garden Grove. Project duties included coordination with project stakeholders (City, Design Engineer, Contractor, Parks Department, Walton Intermediate School, etc), reviewing shop drawings and responding to RFI's, administering progress status meetings, reviewing progress pay applications, and negotiations for T&M work. Project construction included structural rehabilitation inside and outside of the two tanks, construction of a seismic curb in the interior, and waterproofing of the exterior top slab. Participated in strategic meetings to discuss isolation of each reservoir and cleanup of grease buildup inside the west reservoir.

**CM and Inspection Services for Orangewood Avenue Sewer Improvement Project, Garden Grove Sanitary District, Garden Grove, CA:** Construction Manager for construction of 850 feet of 15-inch vcp sewer and five manholes on Orangewood Avenue, near the intersection of Western Street.

### Water Improvement Projects

**CM and Inspection Services for Dryden Street Water Main, Elsinore Valley Municipal Water District, Wildomar, CA:** Construction Manager for construction of 800 lineal feet of 8-inch PVC waterline on Dryden Street in the City of Lake Elsinore. The project included construction of the waterline, connection to the existing system in two locations, construction of fire hydrants, and pavement restoration.

**CM and Inspection Services for Large Potable Water Valve Replacement at Redondo Avenue and Kilroy Airport Way, Phase 2, Long Beach Water Department, CA:** Construction Manager/Resident Engineer for removal of four large gate valves at the intersection of Redondo Avenue and Kilroy Airport Way. The project replaced two 30-inch gate valves, and two 24-inch gate valves (with butterfly valves of the same

# Omar M. Abutaleb, PE

## Construction Manager

### REGISTRATION

CA/Professional  
Engineer/Traffic/#1659

### EDUCATION

1988/Civil Engineering/California  
State University Los Angeles

### AFFILIATIONS

American Society of Civil  
Engineers

Institute of Transportation  
Engineers

Mr. Abutaleb has over 25 years of experience in a wide variety of engineering and construction projects. His diversity of knowledge and expertise was attained through years of service with both public agencies and private sector companies. Mr. Abutaleb managed the development of numerous PS&E packages for various transportation projects including streets, water and sewer lines, storm drain lines and their structures, traffic signals, signing and striping, street lighting and traffic handling plans. He has extensive project management and construction management experience in the building of large, complex, multi-phase developments having recently successfully completed work for the Kingdom of Saudi Arabia's new Student Housing, encompassing the construction of 22 four-level concrete apartment buildings (88,000 square meters of Building Area) at the King Abdullah University of Science and Technology (KAUST.)

## Projects

**CM and Inspection Services for West Haven Reservoirs Rehabilitation, City of Garden Grove, CA:** Served as Resident Engineer and Construction Inspector for the rehabilitation of two 10 MG prestressed buried concrete reservoirs located in West Haven Park in the City of Garden Grove. Project duties included coordination with construction manager, daily inspection and documentation for conformance to plans and specifications, attendance at progress meetings, and review of progress pay applications. Project construction included structural rehabilitation inside and outside of the two tanks, construction of a seismic curb in the interior, and waterproofing of the exterior top slab. Participated in strategic meetings to discuss isolation of each reservoir and cleanup of grease buildup inside the west reservoir.

**CM and Inspection Services for Large Potable Water Valve Replacement at Redondo Avenue and Kilroy Airport Way, Phase 1, Long Beach Water Department, CA:** Alternate Construction Inspector for removal of four large gate valves at the intersection of Redondo Avenue and Kilroy Airport Way. The project replaced one 42-inch gate valve, one 30-inch gate valve, and one 24-inch gate valve (with butterfly valves of the same size) in the public right-of-way. The project also replaced one 42-inch butterfly valve with an electric actuator inside the Long Beach Groundwater Treatment Plant.

**Inspection Services for North Bay Intake Pump Station, Lake Arrowhead Community Services District, Lake Arrowhead, CA:** Provided full-time construction inspection to observe construction progress, monitored conformance with the construction plans and specifications, provided assistance with design deviations, and acted as the District representative on site. The project included demolition of existing facilities including pump station, vaults, pumps, valves, and electrical equipment; construction of on-shore pump station structure with stone veneer, access hatch with vertical turbine pumps and motors, piping, valves, and surge tank; construction of electrical building extension including conduits, wiring, manual transfer switch, switchgear, VFD's and instrumentation; and construction of in-lake pump station including submersible pumps, check and isolation valves, and electrical conduits.

**Orange County Great Park, City of Irvine, CA:** Provided project management and construction management services to the City of Irvine for the development and construction of the City's 1.1 Billion, 1,437-acre Orange County Great Parks project. Responsibilities stretch from project conception/inception to completion and turnover to the City and include: preparation of the engineering design RFPs for infrastructure, lighting, signal and roadway design; preparation of construction bid packages, bid review and contractor selection; and management of the design and construction contracts, implementation and construction management oversight of the construction work.

**King Abdullah University of Science and Technology, Thuwal, Saudi Arabia:** Responsibility was in pre-planning review for construction, review of related submittals and coordination of technical queries (TQ or RFI) in accordance with the approved project plans and specifications. Responsible for construction management of the earthwork, site civil and all utilities for the project. Responsibilities included the coordination of over 300,000 cubic meters of earthwork, 1,500 meters of reinforced concrete culvert box to the red sea, 400 meters of force main pipe, 2,200 meters of storm drain pipe and associated structures, 5,700 meters of water/fire pipe and 1,700 meters of chilled water pipe.

**Project Manager and Resident Engineer - Wildwood Canyon Retention Basins, City of Yucaipa, CA:** Managed the construction of three retention basins at a live creek at the bottom of the mountains in the City of Yucaipa. The project included clearing and grubbing of the creek area and export of 250,000 cubic yard of dirt. The project included massive grading of approximately 500,000 cubic yards to construct the basins. In addition; a spillway channel around the basins was constructed with soil cement banks and various uses of concrete and grouted rip rap. The project also included the construction of culvert box, 72-inch storm drain line, sewer line, water line and various street and parking lot improvements.

**Contract and Construction Manager – Glendale Traffic Management Center, City of Glendale, CA:** Managed the implementation of the Glendale Traffic Management Center (TMC). Oversaw consultant's PS&E and administered the construction contract. Developed the "Engineer's Estimate" and processed the project through various city departments to secure funding. The project included installation of 2-1/2 miles of the city's back bone fiber optic (144SMFO) cable and associated conduits and vaults, installation of several CCTV cameras and changeable message signs along San Fernando Road to serve as an alternate route to the I-5 Freeway.

**Construction Manager and Resident Engineer - Interstate 5 Freeway Ramp Improvements at Colorado Street, City of Glendale CA:** Managed the realignment of I-5 Freeway off-ramp at Colorado Street. Oversaw the consultant PS&E and administered the construction contract. Developed the "Engineer's Estimate" and negotiated contract change orders with the contractor. The project consisted of 1,800 lineal feet of concrete lane widening, relocating sewer and water lines, installations of storm drain lines and associated manholes and structures, installation of traffic signal and street lighting system. The project also included construction traffic handling and close coordination with Caltrans.

**Contract and Construction Manager - Traffic Signal Modifications Downtown Glendale, City of Glendale, CA:** Responsible for the development of the PS&E package and contract administration for traffic signal modifications and interconnect system in the Glendale downtown area along Brand Boulevard, Central Avenue and Glendale Avenue. Phase I included the modifications of twenty traffic signals and Phase II included modifications of thirty-seven traffic signals. Total of 57 traffic signals within the downtown Glendale area.

# Juan Torres

## Construction Inspector

### CERTIFICATIONS

40-Hour OSHA Trained, 29 CFR 1910.120 (e)(2)/8 CCR 5192

Radiation Safety and Use of Nuclear Gages.

Training and Certification for Mechanics, 1982

GSI Certified Inspector-Construction QA/QC for Geosynthetics, Compacted Clay and GCL Liner Installation

TRI/GSI Short Course on Construction QA/QC for Geosynthetics, Compacted Clay and GCL Liner Installation

Mr. Torres has more than 30 years of experience as a construction inspector and quality assurance/quality control (QA/QC) monitor for a variety of construction projects to verify conformance with project plans and specifications.

As a QA/QC monitor, Mr. Torres has worked on a variety of public works projects involving mass grading activities, trench backfilling, pipeline and pavement installation, slope stabilization, foundation preparation and installation, oriented-drilling, and field instrumentation for construction and post-construction monitoring. He has also performed both construction supervision and QA/QC functions for several public works, landfills and contaminated material remediation projects including fill control, clay liner and clay caps testing, and concrete and rebar inspection.

### Projects

**CM and Inspection Services for Orangewood Avenue, City of Garden Grove Garden, Grove, CA:** Construction Inspector for the upsizing of approximately 850 feet of existing 10-inch VCP sewer to a 15-inch VCP sewer, on Orangewood Avenue to the Western Avenue intersection, where it discharged into an existing Orange County Sanitation District (OCSD) manhole.

**CM and Inspection Services for Sanitary Sewer Rehabilitation and Replacement Program 1, Long Beach Water Department, CA:** Construction Inspector for this City-wide sewer rehabilitation project for Long Beach Water Department. The project included removal and replacement of 150 lf of 8-inch sewer, CIPP lining of 7,300 lf of 8-inch through 12-inch sewers, spot repairs, manhole cleaning and CCTV, lateral intrusions repair, and installation of top-hats at 20 locations.

**CM and Inspection Services for South Long Beach Sewer Improvement Project, Long Beach Water Department, CA:** Construction Inspector for rehabilitation of 17,500 lineal feet of sewer pipelines. The work included CCTV inspections, cleaning and lining of 8-inch, 10-inch and 12-inch sewers, point repairs, removing and replacing sections of 8-inch sewer, restoring existing laterals after repair/lining, root removal, installation of "top hat" repairs, and repair of intruding laterals, manhole channels and manhole rehabilitations.

**CM and Inspection Services for Cornerstone Church Sewer Extension, Elsinore Valley Municipal Water District, Wildomar, CA:** Construction Inspector for construction of 1,800 lineal feet of 8-inch sewer pipelines including 8 manholes. The project extended the existing sewer collection system to serve the Cornerstone Church located on Monte Vista Drive in the City of Wildomar.

**CM and Inspection Services for Third and Forest Sewer Pipeline, City of Laguna Beach, CA:** Construction Inspector for a large diameter sewer relocation project near the City Hall. The project involved abandonment of 1,600 lineal feet of 24-inch trunk sewer, 1,350 lineal feet of 15-inch inverted siphon, and removal of 750 lineal feet of 8-inch sewer. The replacement sewer followed an alignment in front of the City Hall and consisted of 1,280 lineal feet of trunk sewer with an additional 360 lineal feet of 12-inch sewers.

**Water Pipeline Replacement Project, Yorba Linda Water District, Yorba Linda, CA:** QC Monitor during observations and testing needed to assure proper compaction of subgrade soils and placement and compaction of aggregate base, asphalt concrete in general accordance with the latest version of Greenbook and project's specifications.

# Donald Romine

## Construction Inspector

### EDUCATION

Confined Space Awareness Course

Trenching and Excavation Training, CAL/OSHA

First Aid and CPR

### CERTIFICATIONS

2008/Construction Safety and Health, US Department of Labor, OSHA

Donald Romine has over 30 years of experience in the construction inspection of water and wastewater facilities. This experience encompasses pipelines, reservoirs, pump stations, wells, street improvements, and other public works projects. He has been responsible for QA/QC monitoring of construction activities, preparing daily construction inspection reports and documentation, verifying compliance with plans and specifications, ensuring testing protocol is satisfactorily conducted, review of progress payment applications, tracking material quantities, maintaining record drawings, conducting final inspections, and generating final punch list.

## Projects

### Water Improvement Projects

**CM and Inspection Services for Large Potable Water Valve Replacement at Redondo Avenue and Kilroy Airport Way, Phase 1, Long Beach Water Department, Long Beach, CA:** Alternate Construction Inspector for removal of four large gate valves at the intersection of Redondo Avenue and Kilroy Airport Way. The project replaced one 42-inch gate valve, one 30-inch gate valve, and one 24-inch gate valve (with butterfly valves of the same size) in the public right-of-way. The project also replaced one 42-inch butterfly valve with an electric actuator inside the Long Beach Groundwater Treatment Plant. This project was high-profile and a critical improvement to Long Beach Water Department's potable water treatment and distribution system. These large valves are key components of the Groundwater Treatment Plant main discharge to the Alamitos storage reservoirs. Construction was carefully coordinated not only with public works but also with the Groundwater Treatment Plant operators.

**Upper River Well Field and Water Supply Pipeline, West Conveyance Pipeline, Mojave Water Agency, Victorville and Hesperia, CA:** Provided construction management and construction inspection services for this \$8 million pipeline project which involved 32,250 LF of 18-inch and 42-inch cml&c steel pipeline. Served as a Senior Construction Inspector. Mr. Romine's duties included material testing, ensuring quality control, providing community relations, monitoring site safety, coordinating survey, and removal of hazardous materials. Coordinated activities and schedules with utility companies, contractors, and with City departments. Attended weekly and monthly progress meetings, organized meeting minutes, change orders, schedules, progress payments, RFI's and reviews submittals. Compiled information and prepared daily reports and digital photos.

**District 4 Phase I Water Main Replacement, City of Pomona, CA:** Provided construction inspection services within this small, ½ square mile, residential community adjacent to downtown Pomona. Mr. Romine was responsible for construction inspection and documentation of this \$1.9 million project which included the installation of approximately 6,306 lineal feet of new 6-inch and 12-inch ductile iron water main line with associated new valves, hydrants, appurtenances and meter services. The project also included the subsequent or simultaneous abandonment and/or removal of the existing cast iron or steel water main line pipe. After replacement of the water line, new street improvements including removal and replacement of related concrete pavement, curb and gutter, sidewalks, driveways, cross gutters and curb ramps were installed. The existing asphalt pavement roadway within the pipeline replacement area was then cold milled and replaced with new HMA and ARHM asphalt concrete.

**District 2 and 3, Phase I Water Main Replacement, City of Pomona, CA:** Provided construction inspection services for a diverse residential and commercial area within downtown Pomona. Mr. Romine was responsible for construction inspection and documentation of this \$3.8 million project which involved removal and installation of 17,000 lineal feet of 4-inch and 8-inch ductile iron water main, repaving of



existing streets with new HMA & ARHM; and replacement of concrete pavement, curb, gutter, sidewalks, driveways, cross gutters, curb ramps and catch basins.

**Product Pipeline Project, Santa Ana Watershed Project Authority, Riverside County, CA:** Provided construction inspection services for the construction of 48,000 lineal feet of 24-inch and 30-inch diameter cml&c welded steel water line which transports desalted water product from San Bernardino County to the Jurupa Community Services District.

**CFD No. 1 Water Facilities, Jurupa Community Services District, Riverside County, CA:** Served as Senior Construction Inspector for the Jurupa Community Services District on this 47,000 lineal feet of 16-inch to 30-inch diameter waterline project which also included a 300-hp, 6,000 gpm booster station, two 750-hp, 5,400 gpm water wells, and a 6 MG welded steel water storage reservoir. His duties encompassed: administering the contract; inspecting the work; conducting weekly progress meetings; coordinating with various agencies and utility companies; monitoring the schedule; verifying quantities and assuring quality control; maintaining traffic control, site safety, and public relations; processing submittals, weekly statements of working days, change orders, progress payments, and punch lists; and documenting the work via daily reports and digital photography.

**Wastewater Improvement Projects**

**CM and Inspection Services for Collier Avenue and Pasadena Street Manhole Rehabilitation and Replacement, Elsinore Valley Municipal Water District, CA:** Construction Inspector for rehabilitation of 14 existing manholes in the City of Lake Elsinore. Rehabilitation efforts included removing and replacing the existing cones to meet District Standards, repair of manhole shelves, interior surface preparation, and lining with polyurethane.

**CM and Inspection Services for Sanitary Sewer Rehabilitation and Replacement Program 1, Long Beach Water Department, CA:** Construction Inspector for this City-wide sewer rehabilitation project for Long Beach Water Department. The project included removal and replacement of 150 lf of 8-inch sewer, CIPP lining of 7,300 lf of 8-inch through 12-inch sewers, spot repairs, manhole cleaning and CCTV, lateral intrusions repair, and installation of top-hats at 20 locations.

**Hamner Avenue Waterline, Trunk Sewer and Wastewater Metering Station, Jurupa Community Services District, Riverside County, CA:** Mr. Romine served as Senior Construction Inspector for Jurupa Community Services District for the construction of 13,000 lineal feet of 16-inch diameter water line as well as 12,000 lineal feet of 8-inch to 21-inch diameter trunk sewer and associated water metering station.

**Wineville Avenue Waterline, Trunk Sewer and Wastewater Metering Station, Jurupa Community Services District, Riverside County, CA:** Mr. Romine served as Senior Construction Inspector for Jurupa Community Services District for the construction of 5,300 lineal feet of 18-inch diameter water line as well as 9,500 lineal feet of 12-inch to 24-inch diameter trunk sewer and associated water metering station.

# Jeff W. Wilson

## Construction Inspector

### EDUCATION

1987/Mechanics/Universal  
Technical Institute, Arizona

Water Math and Treatment  
Courses/Santiago Canyon College

1986/Diamond Bar High School

### CERTIFICATIONS

40-Hour OSHA Trained, 29 CFR  
1910.120 (e)(2)/8 CCR 5192

Radiation Safety and Use of  
Nuclear Gages

Department of Health Services  
Distribution D3

Department of Health Services  
Treatment Plant T2

Mr. Wilson has more than 30 years of experience as a construction manager and inspector focused on water, environmental, and geotechnical engineering construction projects. His work history includes employment experience with numerous engineering and construction companies. For a three-year period, he served in the operations and maintenance department for Mesa Consolidated Water District servicing natural gas engines, pumps, and reservoirs. He also served as a Construction Manager for Advanced Construction Technologies.

Mr. Wilson has taken on a full range of responsibilities in construction including management, inspection, field testing and coordination with clients and other project stakeholders. He is well versed and experienced with concrete construction, masonry construction, soils inspection, welding, servicing and operations of mechanical equipment, and pipeline construction.

## Projects

**CM and Inspection Services for Magnolia Reservoir and Booster Pump Station Rehabilitation, City of Garden Grove, CA:** Served as Construction Inspector for the rehabilitation of a 5 MG prestressed buried concrete reservoirs located in Magnolia Park in the City of Garden Grove. Project duties included coordination with construction manager, daily inspection and documentation for conformance to plans and specifications, attendance to progress meetings, and review of progress pay applications. Project construction included structural rehabilitation inside and outside of the tank, construction of a seismic curb in the interior, and waterproofing of the exterior top slab. Construction also included the removal and replacement of a natural gas engine, right angle gear drive, and vertical turbine pump.

**CM and Inspection Services for Large Potable Water Valve Replacement at Redondo Avenue and Kilroy Airport Way, Phase 2, Long Beach Water Department, CA:** Alternate Construction Inspector for removal of four large gate valves at the intersection of Redondo Avenue and Kilroy Airport Way. The project replaced two 30-inch gate valves, and two 24-inch gate valves (with butterfly valves of the same size) in the public right-of-way. Construction was separated in two stages to minimize disruption to LBWD influent transmission main to the Alamitos Reservoir site and the Groundwater Treatment Plant.

**Northrup N12 Groundwater Cleanup and Injection Wells, Orange County Water District, Anaheim, CA**

**Operations and Maintenance for Reservoirs and Natural Gas Engines, Mesa Consolidated Water District, Costa Mesa, CA**

**Trampas Dam Reservoir Transfer Pipelines, Santa Margarita Water District, Rancho Mission Viejo, CA**

**16-inch Domestic, Recycled, and Fire Line, City of Beaumont, CA**

**Parallel 60-inch Concrete Storm Drain Pipelines, City of Walnut, CA**

**Environmental Plume Cleanup for Shell and Chevron Treatment Plant, City of El Toro, CA**

**100-Acres of HDPE Liner Improvements, Waste Management**

**Trampas Dam Reconstruction – Soils and Geotechnical Inspections, Santa Margarita Water District, Rancho Mission Viejo, CA**

**Well Points and Treatment Plant for Contaminated Groundwater and Soils, City of Corona, CA**

**Redline and Purple Line Metro Rail Degassing Hydrogen Sulfide, Metro Rail, Los Angeles, CA**

## Section 4 – Statement of Availability

JIG is committed to serving the City and our project team is capable of providing construction management and inspection services in an efficient and expeditious manner. The following is a listing of our in-house team's availability as of the date of this proposal.

<i>Project Team Member</i>	<i>Position</i>	<i>Availability</i>
Joseph Gutierrez	Principal / Construction Manager	50%
Omar Abutaleb	Construction Manager	25%
Juan Torres	Construction Inspector	90%
Donald Romine	Construction Inspector	100%
Jeff Wilson	Construction Inspector	50%

## Section 5 – Rate Schedule

The following hourly rates will be used for this proposal and will remain effective until December 31, 2022. Rates will increase at 3% for each 12-month period after the aforementioned effective date.

### JIG Consultants

Administrative Assistant	\$ 75.00 / hr.
Construction Inspectors	\$ 145.00 / hr.
Construction Managers	\$ 185.00 / hr.
Principal-in-Charge	\$ 185.00 / hr.

### Reimbursables:

1. Standard computer and technology costs are incorporated into these hourly rates as well as direct labor, overhead, fringe benefits and fee.
2. Mileage and parking expenses incurred by the construction inspectors are included into the hourly rates shown above. All others will be invoiced at 2022 mileage rates.
3. Prints, plots, messenger service, subsistence, air travel, and other direct expenses will be charged at cost plus 10%.