

# Code Enforcement Program Update

**Building & Safety Division**

Community and Economic Development Department

July 24, 2018

# Code Enforcement Overview

Enforce the Municipal Code pertaining to land use regulations, promote and maintain a quality living, and working environment through reactive and pro-active enforcement efforts

## Do...



- ❖ Overgrown Vegetation
- ❖ Property Landscape
- ❖ Painted Exterior

- ❖ Storage of Debris
- ❖ Inoperative Vehicles
- ❖ Short Term Rentals



- ❖ Sign Regulations
- ❖ Trash Storage Areas
- ❖ Animal/ Pest



## NOT Do...



- ❖ Police
- ❖ Public Works
- ❖ Traffic

- ❖ Building Abatement
- ❖ Vector Control
- ❖ Animal/ Pest

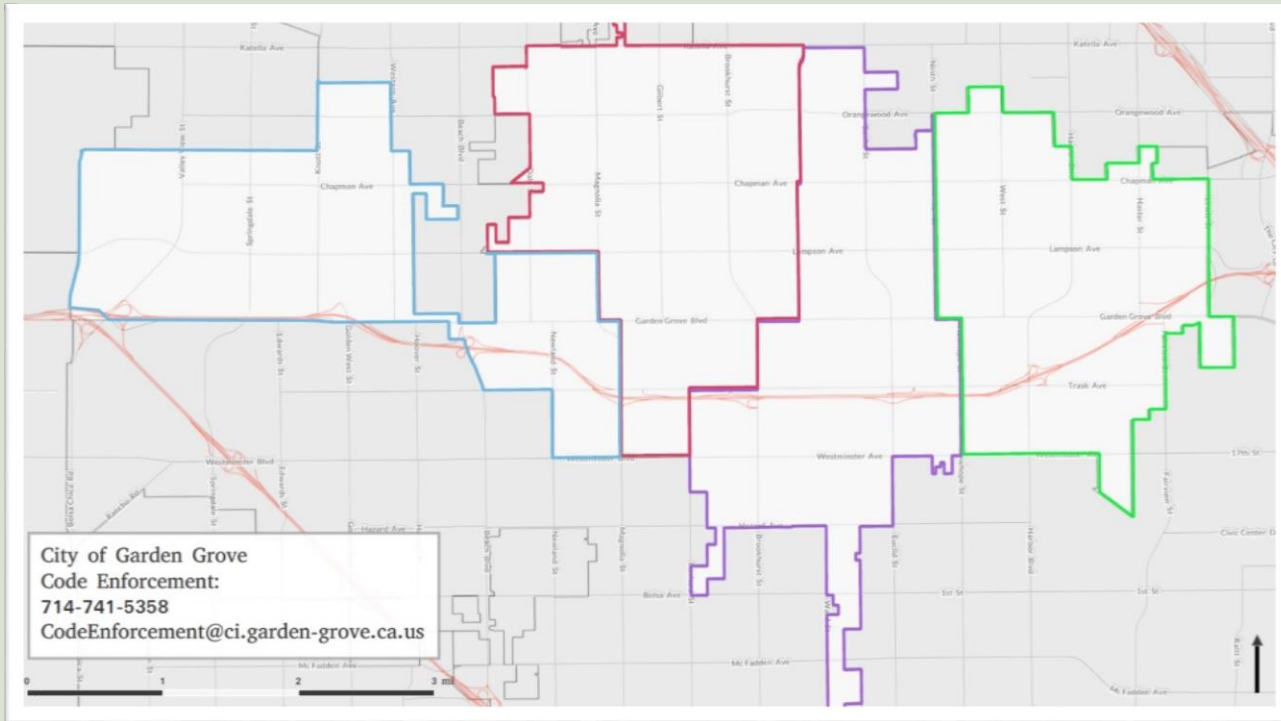


- ❖ Neighborhood Issues
- ❖ Excessive Parking
- ❖ Environmental



# Current Code Enforcement Program

## Map of Enforcement Districts

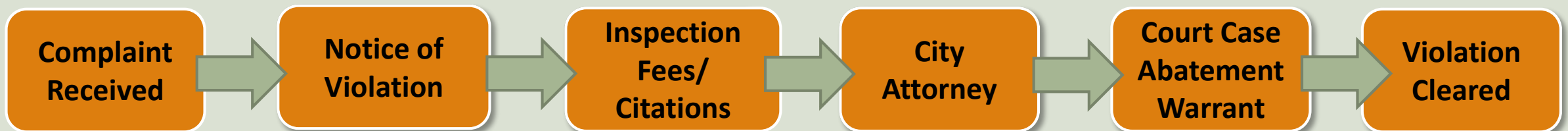


## Tools of Enforcement

- ❖ Notice of Violation
- ❖ Inspection Warrant
- ❖ Re-inspection Fees
- ❖ Admin Citation
- ❖ Receivership

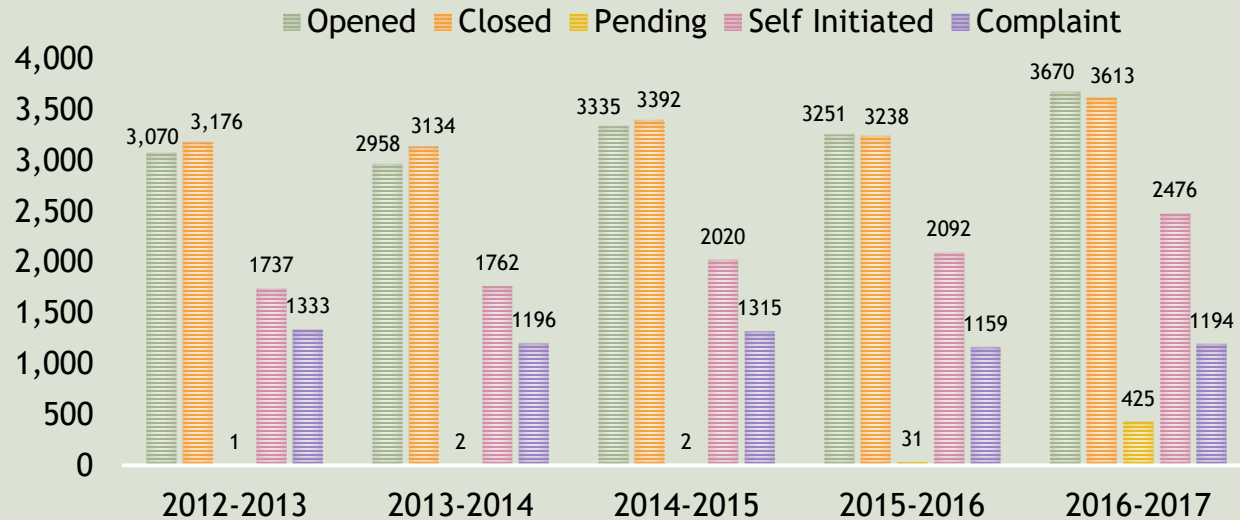


## The Enforcement Process



# Code Enforcement Statistics

## Open/ Closed Cases



## Top Violations

VIOLATION	2015	VIOLATION	2016	VIOLATION	2017
Storage of Debris	984	Storage of Debris	1004	Storage of Debris	1006
Overgrown Vegetation	827	Overgrown Vegetation	607	Overgrown Vegetation	852
Trash Containers Left Out	589	Trash Containers Left Out	599	Trash Containers Left Out	574
Inoperative Vehicle	348	Parking on the Unpaved	501	Parking on the Unpaved	464

## Daily CE Operations

- ❖ Inspections per day
- ❖ Time on site
- ❖ Daily Field Time
- ❖ Daily Office Time
- ❖ Response time

Case Study #1

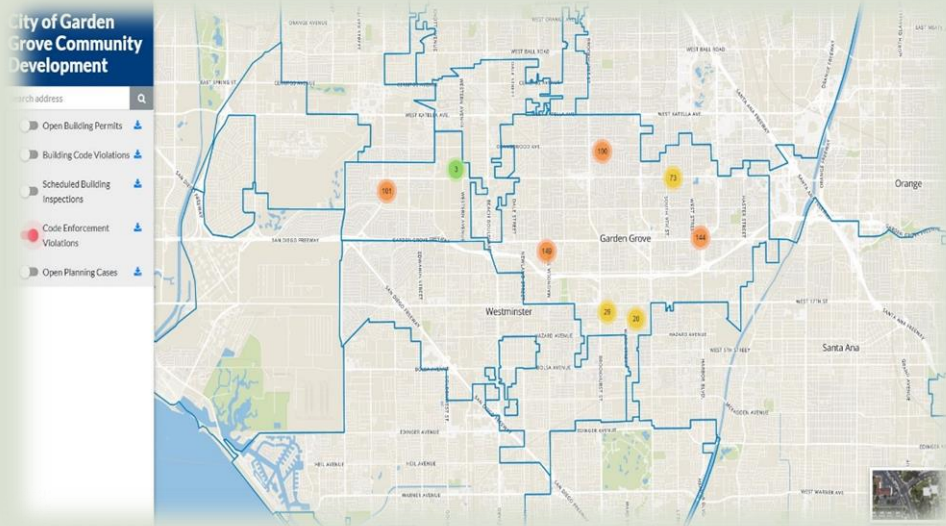



<b>Property Type</b>	Residential
<b>Case Opened</b>	11/16/2017
<b>Cased Closed</b>	04/23/2018
<b>Duration</b>	158 days
<b>Violations</b>	<ul style="list-style-type: none"> <li>Un-painted building</li> <li>Trash, rubbish &amp; debris</li> <li>Commercial vehicle in residential area</li> <li>Illegal business in the residential area</li> </ul>
<b>Inspections Conducted</b>	12
<b>Notices of Violations Issued</b>	11/16/17 11/30/17
<b>Invoices Issued</b>	none
<b>Administrative Citation(s) Issued</b>	none



# What's next for Code Enforcement

## New Technology and Training



## New Codes and Best Practices



## Community Outreach and updated Volunteer Program



## New Pro-Active Enforcement

- ❖ Short Term Rentals (STRs)
- ❖ Dead Lawns
- ❖ Commercial Properties
- ❖ Parking Enforcement
- ❖ Assertive Citations



**Thank You**

The background features abstract geometric shapes in shades of orange and green, primarily concentrated on the right side of the frame. The shapes are layered and semi-transparent, creating a modern, layered effect. A thin black line runs diagonally across the lower right portion of the image.